

NEW

Usable for **STORAGE TRANSPORT MFH**

- Characteristics:**
- ISPM 15 / IPPC
 - Chamber-dried
 - 800 x 1200 x 144 mm
 - Guaranteed nominal load: 1,500 kg
 - Max. 22% residual moisture

No signs of use, light-coloured wood, no splinters caused by user

Rough-sawn wood, even and recurrent nailing pattern

Key marking of the pallet organisation (EPAL, EUR possible)

All base boards are chamfered on both edges

IPPC identifier, manufacturer identifier or license number, control quality staple

CAUTION: Lightness alone does not ensure affiliation to the NEW class. Do check on the grading criteria of the following classes

4 corner edges chamfered

Key marking of the pallet organisation (EPAL, UIC possible)



CLASS A

Usable for **STORAGE TRANSPORT MFH**

- Characteristics:**
- Light wood colour
 - Pallet has already been used
 - ISPM 15 / IPPC not guaranteed
 - Max. 22% residual moisture

No splinters caused by user

No adhesions e.g. cardboard, film, tapes, labels

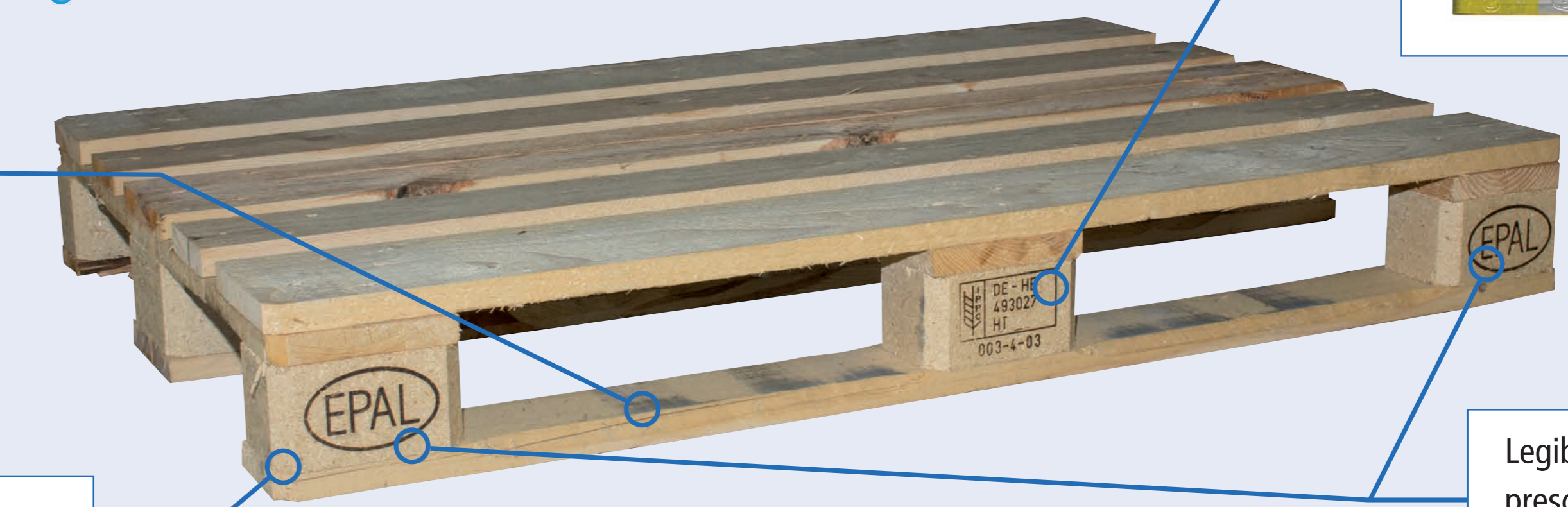
Licensed repair allowed control quality staple and/or repair nailing

Signs of use, but no contamination

No skewed blocks

CAUTION: Lightness alone does not ensure affiliation to class A. Do check on the grading criteria of the following classes

Legibility of all the prescribed key markings (EPAL, UIC, EUR possible)



CLASS B

Usable for **STORAGE TRANSPORT MFH**

- Characteristics:**
- Dark wood colour
 - On assessing whole stacks a dark/light mixture possible
 - Pallet has already been used
 - ISPM 15 / IPPC not guaranteed
 - Max. 22% residual moisture

No adhesions e.g. cardboard, film, tapes, labels

No splinters caused by user

Licensed repair allowed control quality staple and/or repair nailing

Signs of use, wood subsequent darkening permitted

No skewed blocks

Legibility of all the prescribed key markings (EPAL, UIC, EUR possible)



CLASS C

Usable for **STORAGE TRANSPORT**

- Characteristics:**
- Pallet has already been used
 - ISPM 15 / IPPC not guaranteed

Adhesions permitted e.g. cardboard, film, tapes, labels. Higher classification possible once removed

Contamination that cannot be passed onto the product

Surface moisture resulting from use, e.g. fruit or vegetables

Signs of use, wood subsequent darkening permitted

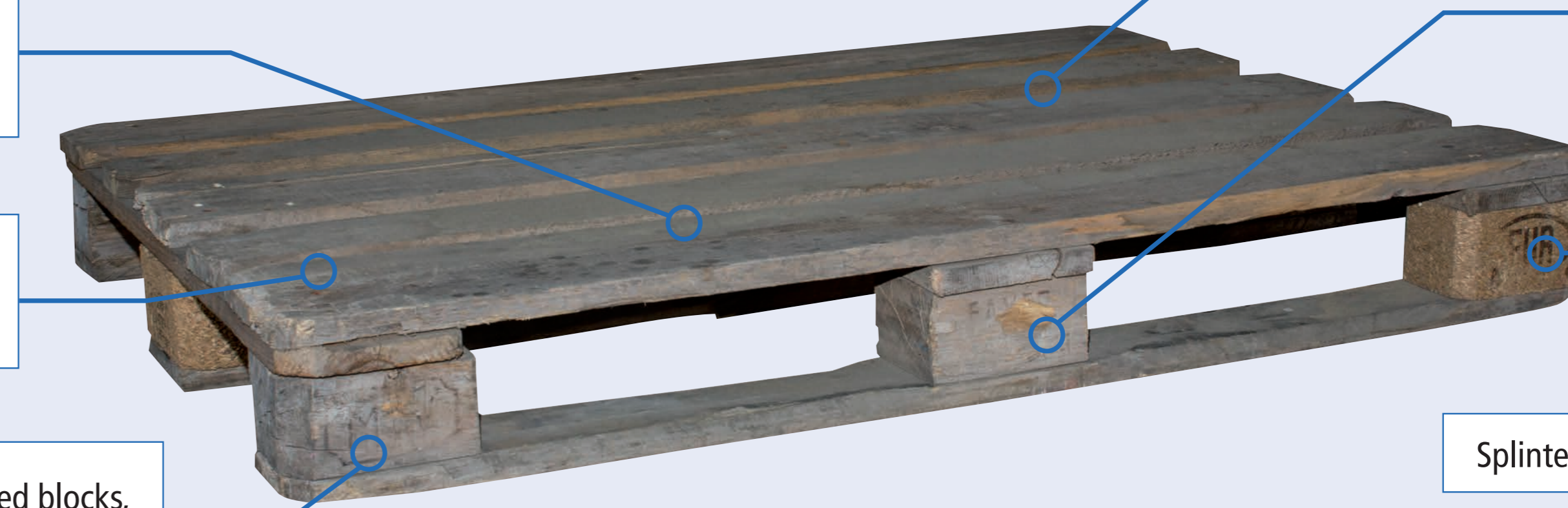
Slightly skewed blocks, (≤ 1 cm of overhang)

CAUTION: A max. 1 nail shank per construction element, a maximum total of 2 nail shanks visible at the pallet the tips of which are not visible or exposed

Licensed repair allowed control quality staple and/or repair nailing

Key identification of the pallet organisation at least legible on one block

Splinters permitted



NOT USABLE



Approved eradication of faults by users for quality classification (A, B, C):



REPAIR only permitted by duly licensed repair company:



Hammering down projecting fastening elements



Drying/cleaning soaked boards



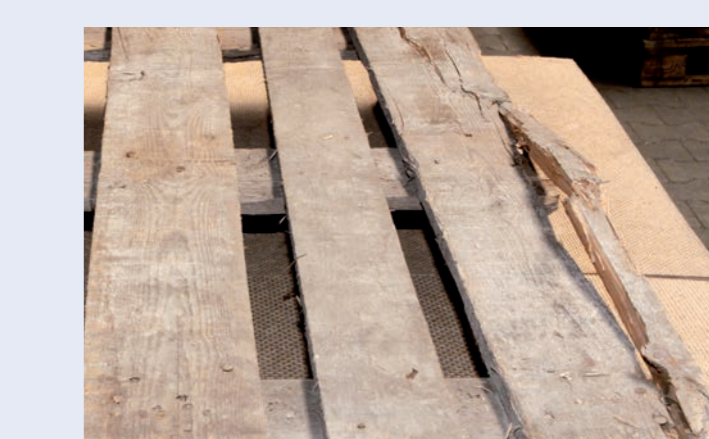
Without being repaired, pallets with these faults must not be used in the open pallet exchange pool



Missing component



Inadmissible component e.g. underdimensioned, woodwormeaten, wane



Stringer, partially or fully fractured board



Skewed block > 1cm



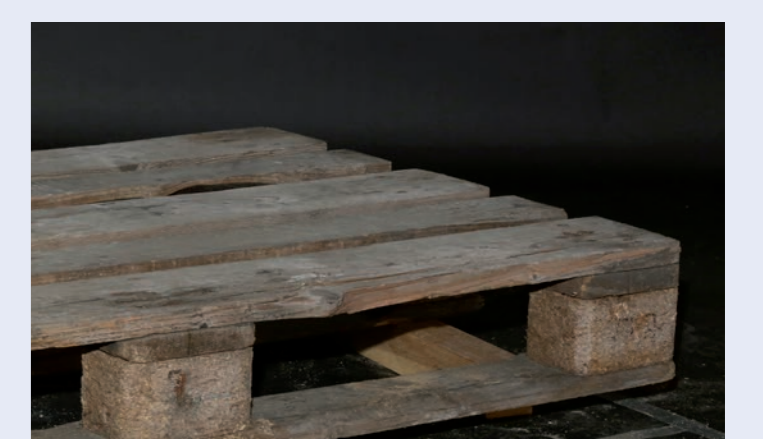
Visible fastening elements e.g. nails



Contaminations which can be passed onto the products e.g. paint, oil, smell, mould, mould stains etc.



Inadmissible repair



No longer any prescribed identification legible

Contact

GS1 Germany GmbH · Maarweg 133 · 50825 Köln · Phone: +49 (0) 221 94714 · 0 · Fax: +49 (0) 221 94714 · 990 · info@gs1-germany.de · www.gs1-germany.de
European Pallet Association e.V. · Wahlerstraße 28 · D-40472 Düsseldorf · Phone: +49 (0) 211 98 480 48 · 0 · Fax: +49 (0) 211 98 480 48 · 48 · info@epal-pallets.org · www.epal.eu

Handed over by: